

The role of Integrated Fire Management (IFM) on climate change adaptation for ecosystem services in tropical and subtropical regions



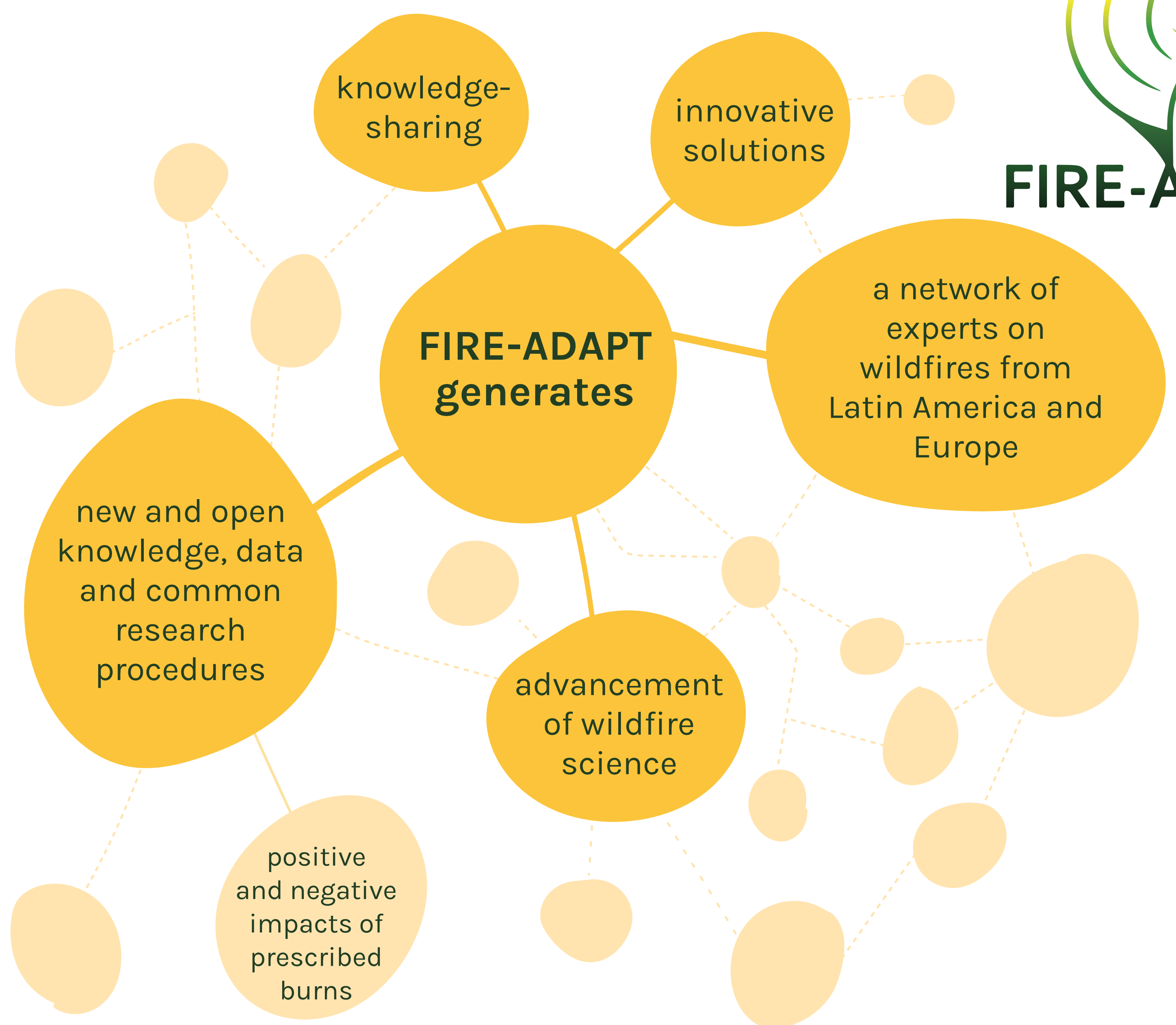
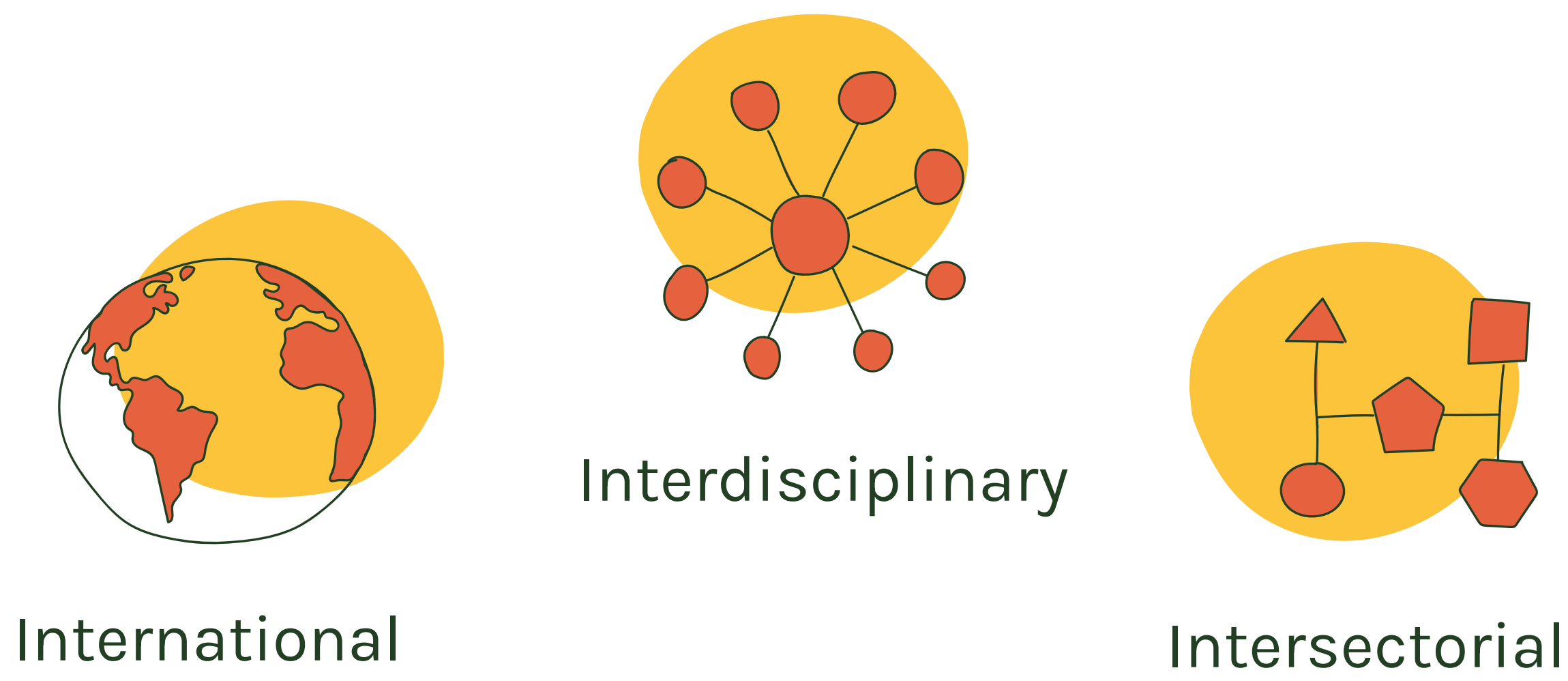
FIRE-ADAPT

Research project that studies the impact of fire on



in ecosystems with very high biodiversity

FIRE-ADAPT is

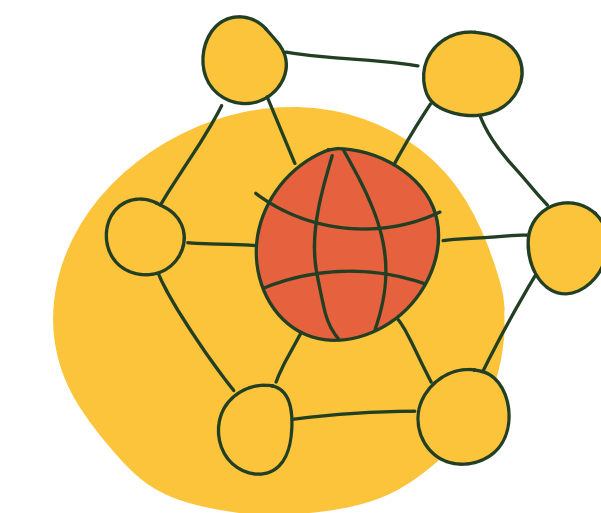


Training, sharing, exchanging and networking are taking place at:



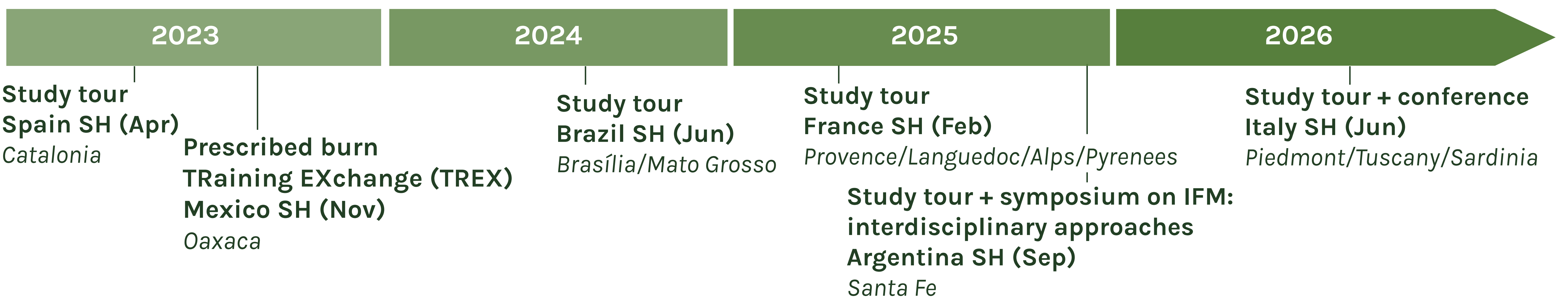
STUDY HUBS (SHs)

Countries with several partner organisations where project activities and IFM practice exchanges concentrate.
Spain, Mexico, Brazil, France, Argentina, Italy.

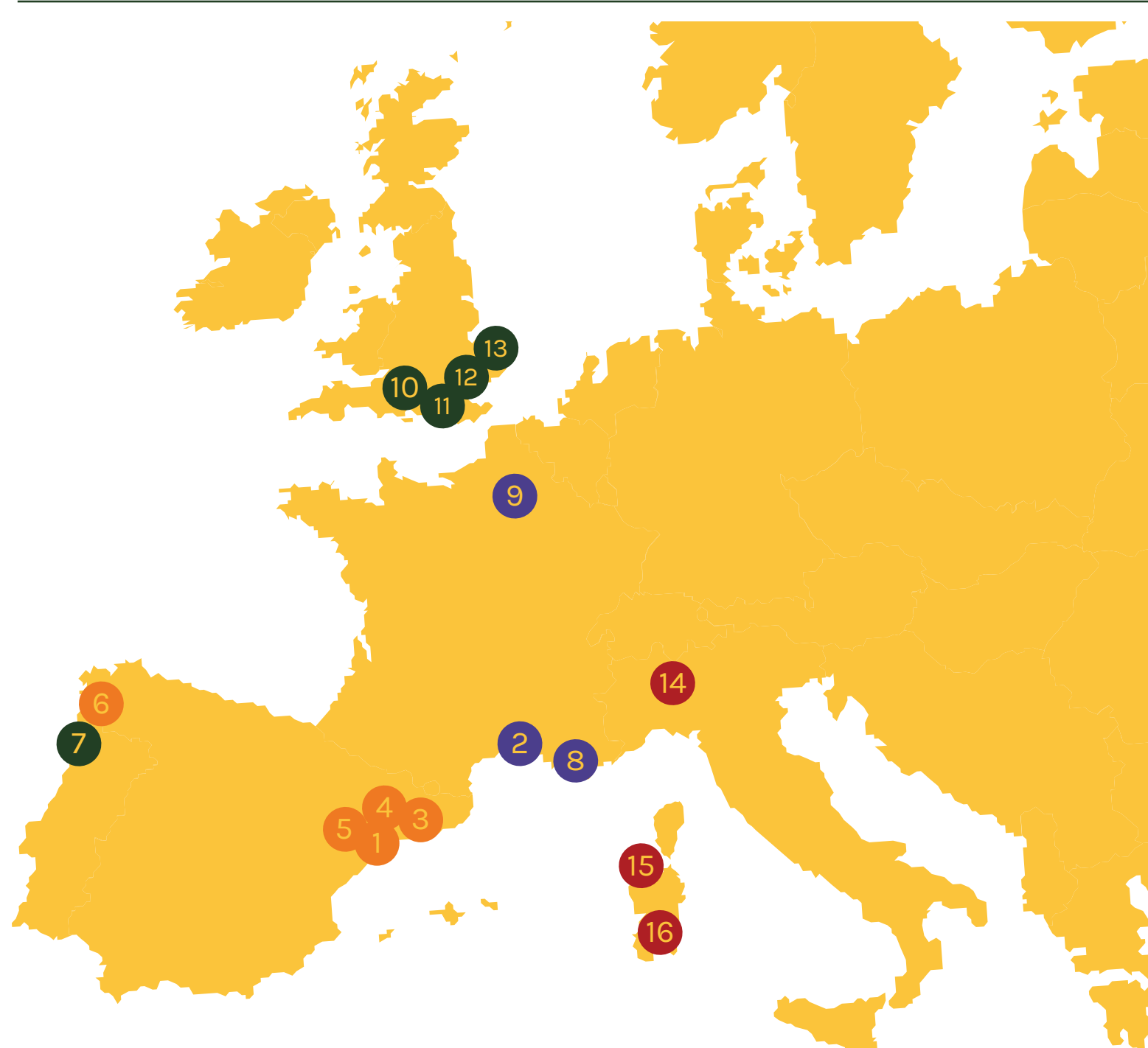
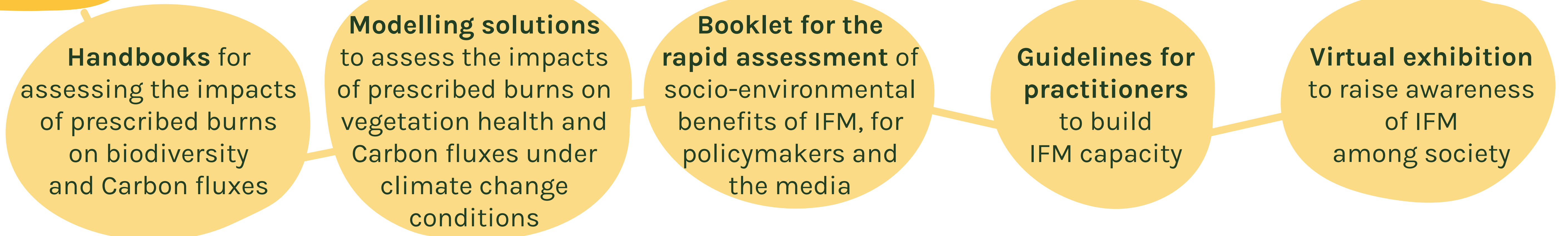


SECONDMENTS

Temporary stays of FIRE-ADAPT staff at study hubs and other partner organisations.



Key outputs



● Spain SH ● France SH ● Italy SH

- PAU COSTA FOUNDATION
- URD
- Universitat de Girona
- CTFC
- Universitat de Lleida

- CSIC
- utad CITAB
- Warucene
- IES
- University of Reading

- cobracollective
- LEVERHULME Centre for Wildfires, Environment and Society
- UE University of East Anglia
- CONICET
- Consejo Nacional de Invt. Científica CNR - Istituto per la Bioeconomia

- COMPRO FORESTALE
- CONAFOR
- WRI MEXICO
- UNIVERSIDAD NACIONAL DE COLOMBIA
- Fundación Amigos de la Naturaleza

- IBAMA
- ICMBio
- CONICET
- CONICET
- FICH UNL-FACULTAD DE INGENIERIA Y CIENCIAS HUMANAS



● Brazil SH ● Argentina SH ● Mexico SH

FIREADAPT.EU



FIRE_ADAPT

Fire-Adapt

fireadapt

FIRE-ADAPT



Funded by the European Union



With support from UK Research and Innovation

Funded by the European Union (EU) and with support from UK Research and Innovation (UKRI). Views and opinions expressed are however those of the author(s) only and do not necessarily reflect those of the EU or UKRI or the European Research Executive Agency (REA). Neither the EU nor UKRI nor REA can be held responsible for them.